

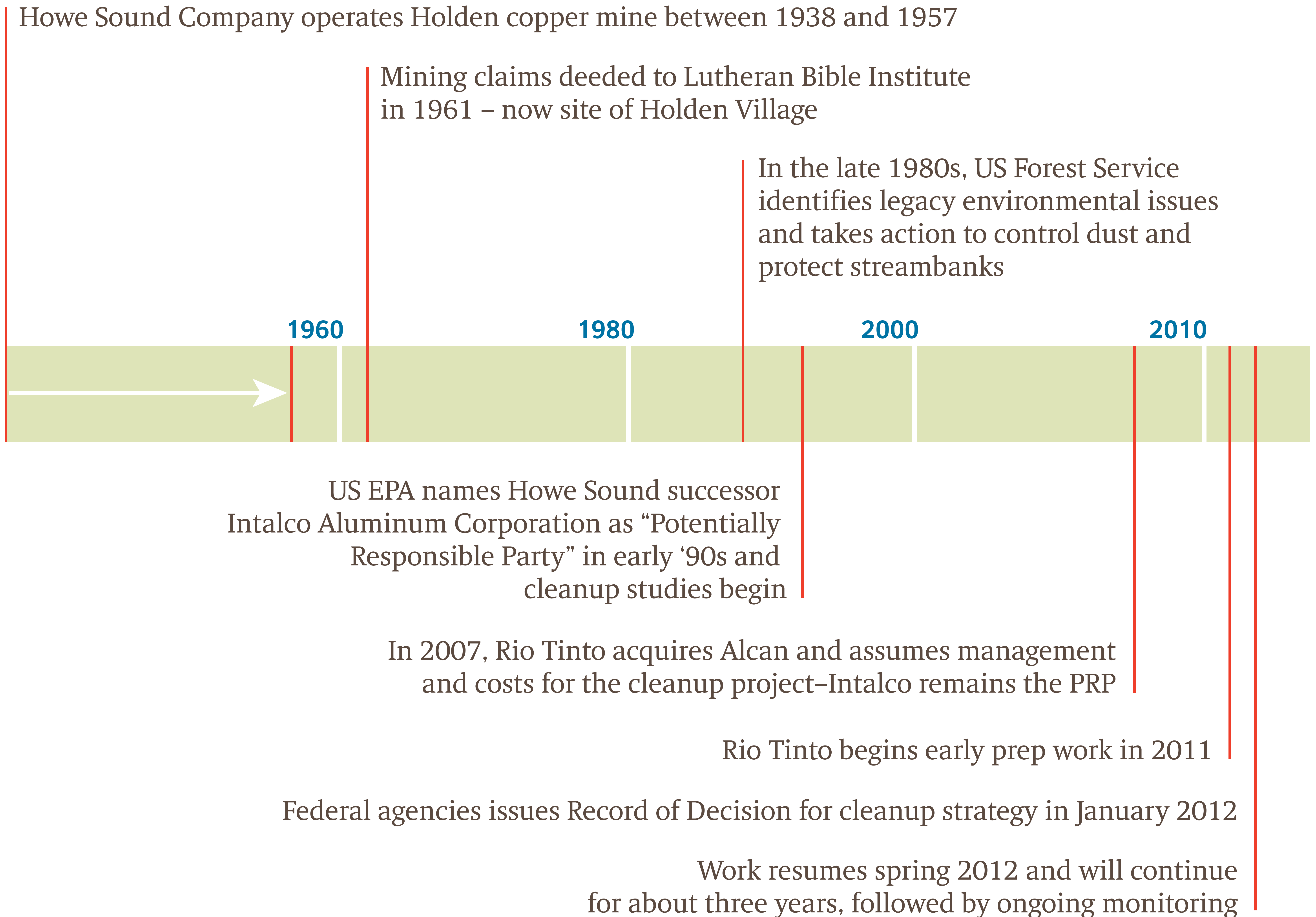
Welcome

**HOLDEN MINE CLEANUP
OPEN HOUSE**

About Rio Tinto

- Rio Tinto is one of world's largest mining groups.
 - Headquartered in the UK with operations around the globe and major hubs in the US, Canada and Australia
 - Major products include aluminum, copper, diamonds, coal, uranium, industrial minerals (borax, titanium dioxide, salt) and iron ore
 - Most operations in North America and Australia; significant businesses in Asia, Europe, Africa and South America
 - Rio Tinto never owned or operated the Holden Mine. Intalco Aluminum Corporation, a successor to the Howe Sound Company, is responsible for the cleanup. Rio Tinto, through its 2007 acquisition of Alcan, is paying for and managing the cleanup on behalf of Intalco. Intalco and Rio Tinto are separate companies.
 - Rio Tinto has an excellent track record of mine development and closure, as well as in cleanup and remediation of historic mining properties, such as Holden
- 

History

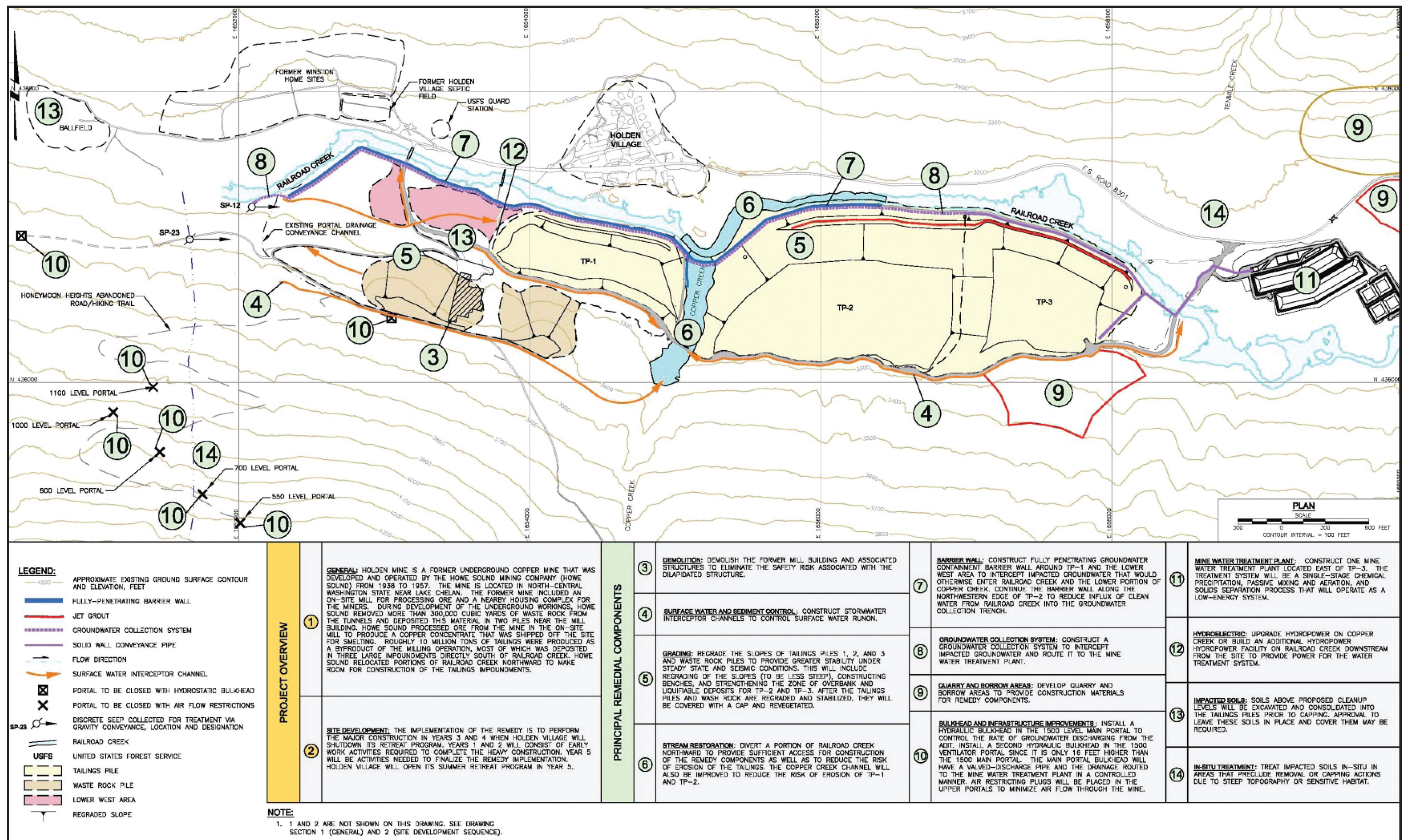


Why clean up the Holden Mine?

Federally mandated cleanup to address environmental problems from the old Holden Mine:

- Snowmelt and rainwater mix with metals to create acid mine drainage from mine portal, and acid rock drainage (ARD) from tailings and waste rock piles
- ARD affects groundwater and surface water quality, including in Railroad Creek
- While creek water is safe for human consumption downstream of Holden Village, it contains concentrations of hazardous substances that exceed water quality standards for aquatic life
- Slopes of tailings piles are too steep to withstand a large earthquake
- Mine-area soils contain concentrations of natural occurring metals

Phase 1 Remediation Plan



Preliminary, under review by regulatory agencies

Remediation Plan



Regraded tailings will be capped with crushed stone and growing medium, then planted



Mill building will be demolished



Tailings will be recontoured and stabilized



Iron staining in creek will eventually dissipate after cleanup

2011/2012 Project Work



Bypass Bridge Over Railroad Creek



Bypass Road Around Holden Village

2012 Project Work



Development of Quarry and Borrow Site



**Contractor
Staging Area**

2012 Project Work



Started Cleanup Work on the Underground



Barge Ramp Construction at Lucerne

2012 Project Work



**Began Barging from
Chelan Boat Company**



Barge Safety, Schedule & Cargo

Safety

- Barges have been operated safely on Lake Chelan for decades
- Safety is Rio Tinto's top priority – operators for the new barge are trained extensively; protocol is in place to deal with emergency situations
- Barges scheduled to avoid highest-use times on lake

Schedule

- 2013 work is underway
- Average of three barge trips a week between the Boat Company and Lucerne in 2013 and 2014
- Barges leave early morning and return in the afternoon or evening – barges run seven days a week

Cargo

- Barges transport equipment and supplies needed for cleanup project, including backhoes, dump trucks, pickup trucks, cement, etc.
- Special precautions are taken for the storage and transportation of fuel for vehicles and explosives for blasting of rock

2012 Project Work



Community Outreach

2013 Project Work

- Relocate Railroad Creek
- Temporary diversion of Copper Creek
- Demolish mill building and Holden Village museum
- Continue developing borrow site and quarry
- Site preparation and monitoring:
 - Platform for barrier wall construction
 - Sediment controls
 - Water quality monitoring (ground and surface)
- Use earthen materials for the remedy (2013-2015)
 - Open quarries to provide rock for erosion protection and soil for the cover
- Build improvements for project operation
 - Safety improvements on roads (began 2012; ongoing)
 - Temporary staging areas for equipment and supplies at Lucerne and Chelan
 - Barge ramp improvements to allow movement of equipment and supplies

2013 Project Work

- Improvements to the barge loading area
- Relocation of the Boat Company parking lot



2013 Project Work

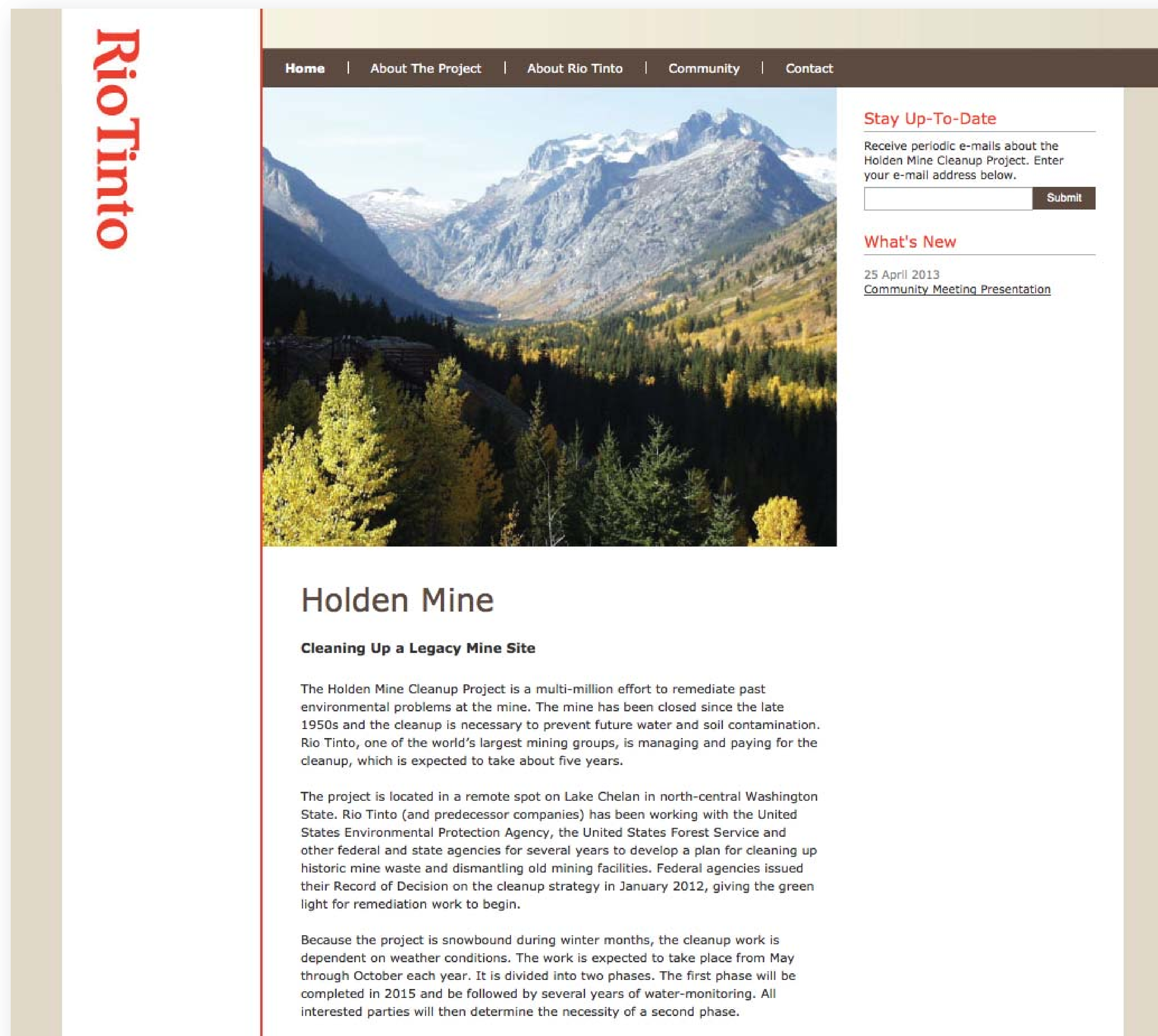
Holden Village

- Relocate Holden Village drinking water lines
- Construct temporary maintenance yard for Holden Village



2013 Project Work

Continued Communication from Rio Tinto



The screenshot shows the Rio Tinto website with a navigation menu (Home, About The Project, About Rio Tinto, Community, Contact) and a main content area. The main content area features a large image of a mountain range and a text block titled "Holden Mine" with the sub-heading "Cleaning Up a Legacy Mine Site". The text describes the multi-million effort to remediate past environmental problems at the mine, which has been closed since the late 1950s. It mentions that Rio Tinto is managing and paying for the cleanup, which is expected to take about five years. The project is located in a remote spot on Lake Chelan in north-central Washington State. The text also notes that the project is snowbound during winter months and dependent on weather conditions, with work expected to take place from May through October each year. The first phase will be completed in 2015 and followed by several years of water-monitoring.



Community Meetings

509-570-3430

Community Call Line

Website: www.HoldenMineCleanup.com

Fact and Fiction

Fiction: *Taxpayers dollars are paying for the cleanup and Rio Tinto is making money.*

Fact: No taxpayer dollars are being used for the cleanup. Rio Tinto is paying the entire cost of this federally mandated multi-million dollar remediation and investing significant resources to clean up the mine site and prevent further environmental degradation. Rio Tinto is a for-profit company, but the cleanup is not a for-profit venture.

Fiction: *The cleanup will make the water quality in Railroad Creek even worse.*

Fact: We have to be very careful not to stir up sediment during the relocation of Railroad Creek. In fact, the agencies have very strict requirements to regulate the amount of sediment in the Creek during the cleanup. As far as water quality, it will only get better. Right now, Railroad Creek actually meets drinking water standards – for people. We will clean it up to ensure that it also meets the standards for sensitive aquatic life in the Creek.

2014 Project Work

- Reshape and cover the tailings and waste rock piles with soil to restore vegetation (8 million tons in three piles on 90 acres)
- Consolidate tailings or cover contaminated soils and restore vegetation
- Install below ground barrier to collect contaminated water
- Build a mine water treatment system

Fact and Fiction

Fiction: *You're cleaning up the Holden Mine so you can go in and mine again.*

Fact: This is a federally mandated mine cleanup. Rio Tinto has no interest in mining the area – and we couldn't even if we wanted to. Holden Village owns the mining claims and the Forest Service have removed the surrounding area from any mineral exploration.

Fiction: *You're going to reprocess the tailings on-site.*

Fact: Again, this is a federally mandated mine cleanup, not a for-profit business venture. It is not economically viable or environmentally sound for Rio Tinto to reprocess the tailings.

Fiction: *Rio Tinto will be hauling tailings and other hazardous materials up and down Lake Chelan.*

Fact: We will be transporting equipment and supplies, including vehicle fuel and explosives for blasting rock. These will be managed according to state and federal regulations.

The historic mining waste will be managed on-site. No tailings or waste rock will be transported off the mine site. Federal requirements call for a one-time removal of a very small quantity – half a barge load or less – of copper concentrate from Holden. This will be transported to a certified facility.